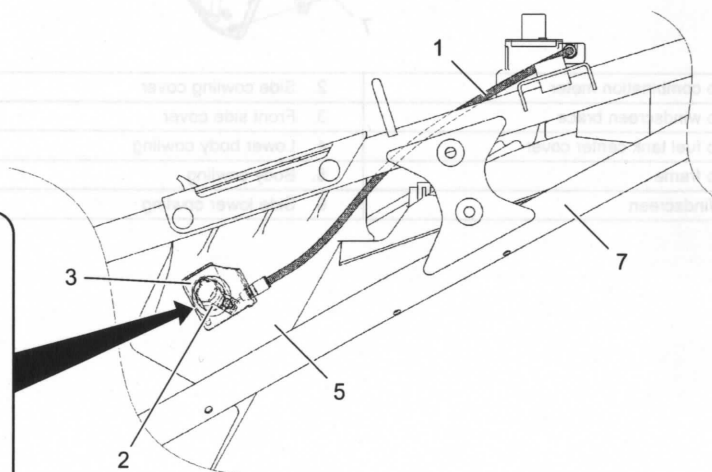
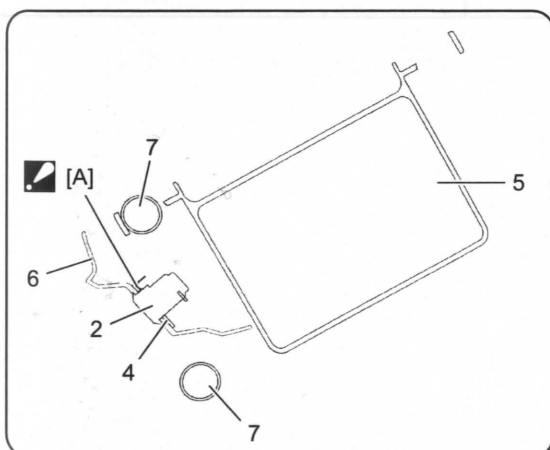
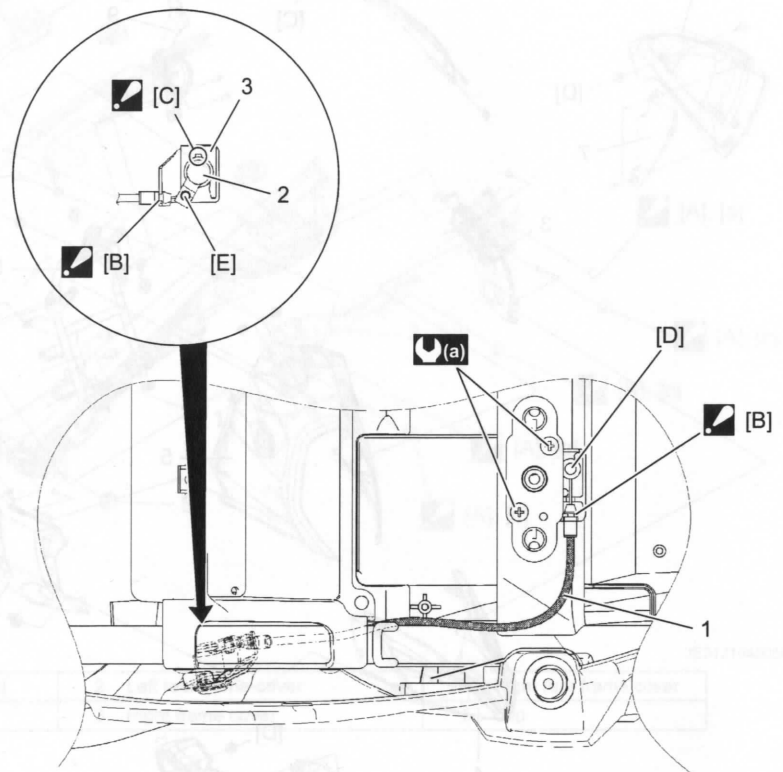


Exterior Parts

Schematic and Routing Diagram

Seat Lock Cable Routing Diagram

BENE31J19402001



IE31J1940040-02

<div> [A]: Install the seat lock assembly plate behind of the seat lock cable guide. </div>	<div> 1. Seat lock cable </div>	<div> 5. Battery holder </div>
<div> [B]: Set the seat lock cable firmly. </div>	<div> 2. Side cowling cover </div>	<div> 6. Frame cover </div>
<div> [C]: Align the rib of seat lock assembly and groove of each part. </div>	<div> 3. Seat lock assembly plate </div>	<div> 7. Frame </div>
<div> [D]: Spherical cable end </div>	<div> 4. Seat lock cable guide </div>	<div> (a) : 5.5 N-m (0.55 kgf-m, 4.0 lbf-ft) </div>